

KHUTZEMATEEN 2025



Valley of the Grizzlies  
PHOTOGRAPHY & BEAR GUIDE | JACQUIE MATECHUK  
CANON AMBASSADOR





## THE ESTUARY, KHUTZEMATEEN SANCTUARY

### DESTINATION KHUTZEMATEEN SANCTUARY

The Khutzeymateen Valley is Canada's only Grizzly Bear Sanctuary. This 39,000-hectare valley lies 40 kilometres (25 miles) northeast of Prince Rupert on the British Columbia coast. It supports a robust ancient trilogy of grizzly bears, spawning salmon, and mammoth Sitka spruce trees.

This area is home to an estimated 40 - 60 grizzlies who depend on the rich valley for their existence, with its dense rainforest, river mouth estuary, and open fjord. It also attracts wolves, migrating geese, ducks, harbor seals, beaver and otters, as well as orca and humpback whales. The watershed also supports over 100 species of birds including owls, grouse, shore birds, hummingbirds, swifts, woodpeckers, and kingfishers.

Uninhabited by humans, there are no roads, villages or campsites, making this valley pure wilderness and the perfect habitat for the grizzly bear. To explore this magnificent valley, we will use the motor yacht, the Afterglow I as our base, and then travel by motorized inflatable to the estuary to safely observe and photograph these mighty animals.



# TRANSPORTATION LOGISTICS

June 21-25, 2025 (5 Day Adventure)

## TO/FROM PRINCE RUPERT:

**FLYING:** Air Canada (1-800-247-2262) offers daily service to Prince Rupert. Please note: The airport in Prince Rupert is situated on an island. To get to the mainland, there is a bus that will board a ferry and take you to the main airport office in downtown Prince Rupert. The same service is available to get to the airport for departure. Check in 2 hours prior to your flight time. The bus/ferry service is complimentary.

**DRIVING:** From Vancouver, take Hwy 1 to Cache Creek, turn off to Hwy 9 to Prince George, then Hwy 16 from Prince George to Prince Rupert. The driving

## TO/FROM THE FLOATING LODGE:

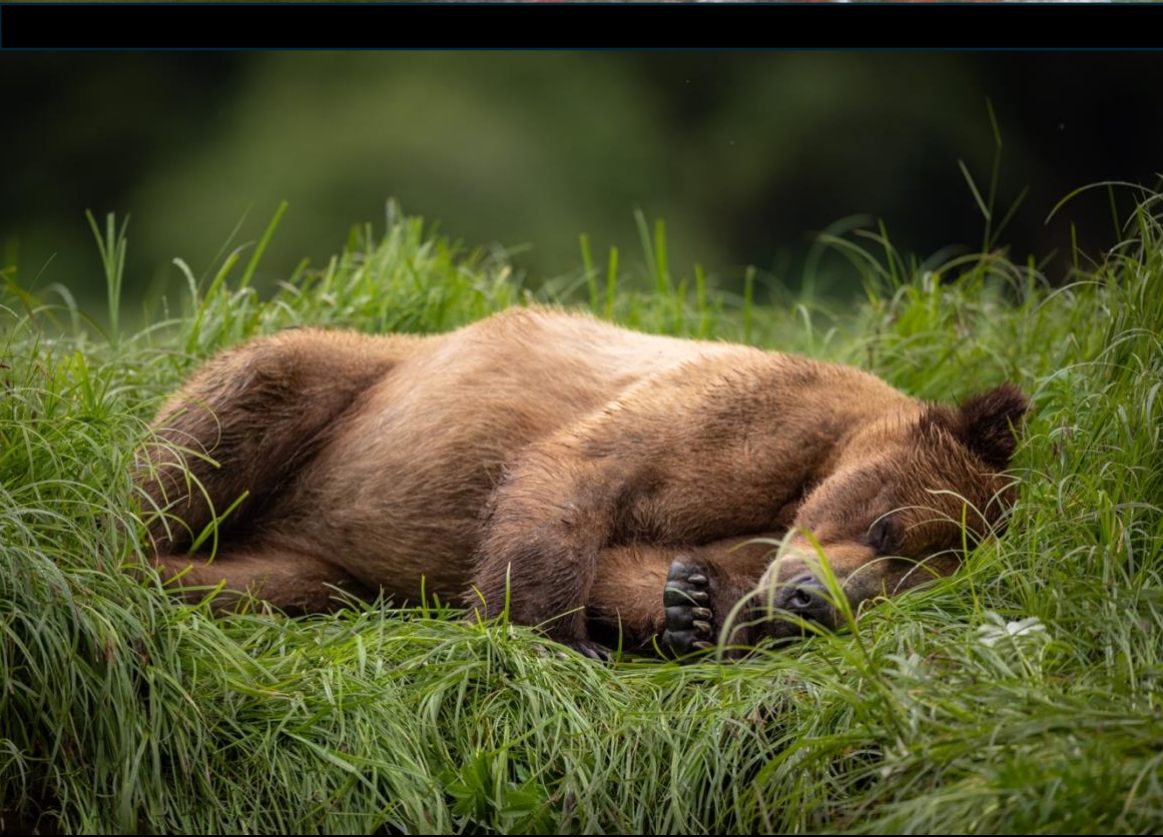
You will travel to/from the Khutzeymateen floating Lodge via charter water taxi. Please have the majority of your gear packed in a soft duffel bag for taxi in with warm jacket and rain gear on or available. We recommend that you wear your heavy clothing and rubber boots for this leg of your trip.

**WATER TAXI DEPARTURE** Please meet in hotel lobby for 7:00 am to catch a taxi to the water taxi dock. There are typically 2 taxis to pick up all parties and luggage for our group, so we will load accordingly

If you are travelling before or after this trip, please arrange to leave any unneeded, extra baggage at your hotel in Prince Rupert.







## PHOTOGRAPHY TOUR PRICING **\$4,450 USD** [\$5950 CAD]

### WHAT TO EXPECT

#### THE FLOATING LODGE

Nestled on the northern edge of British Columbia's Great Bear Rainforest, the Khutzymateen Grizzly Bear Sanctuary is a haven within the Tsimshian territory for a thriving population of coastal grizzly bears. The Khutzymateen Wilderness Lodge, a premier eco-lodge in Canada, offers an unparalleled wilderness retreat in Canada's unique grizzly bear protected area. Our secluded floating lodge, accessible only by water features 8 deluxe guest rooms with queen beds offer stunning ocean and mountain views. Enjoy a wood-fired sauna, cozy living space, and dockside fire pit. Explore the area with sea kayaks or stand-up paddle boards, immersing yourself in the diverse wildlife of this remote coastal haven. Guests enjoy the best of Canadian eco-cultural tourism, immersed in the beauty of nature and wildlife in an ethical wildlife viewing experience.

We use two sources of green energy to power the lodge - the sun and water. We have solar panels mounted on both buildings that power the lodge during daylight hours. The creek beside the lodge provides us with water for our micro hydro - a water wheel that is gravity-fed and empties back into the ocean. The same creek is used for our drinking water, which goes through two filtration systems and is the freshest, cleanest water in the world.

#### YOUR KHUTZEMATEEN CREW

Together, we form a close-knit family unit, living and working side by side in the Canadian wilderness. Our collective heart beats for the wild and free, especially for bears, which are central to our passion and purpose. Our mission is to offer you a warm family welcome and craft a unique wilderness retreat that connects you deeply with nature.

### NO. OF GUESTS: MAXIMUM 7

Most tours host 10 people making it difficult to maneuver with gear and find the right angle. We limit passengers to a total of 7 so there is additional room and comfort in the zodiac

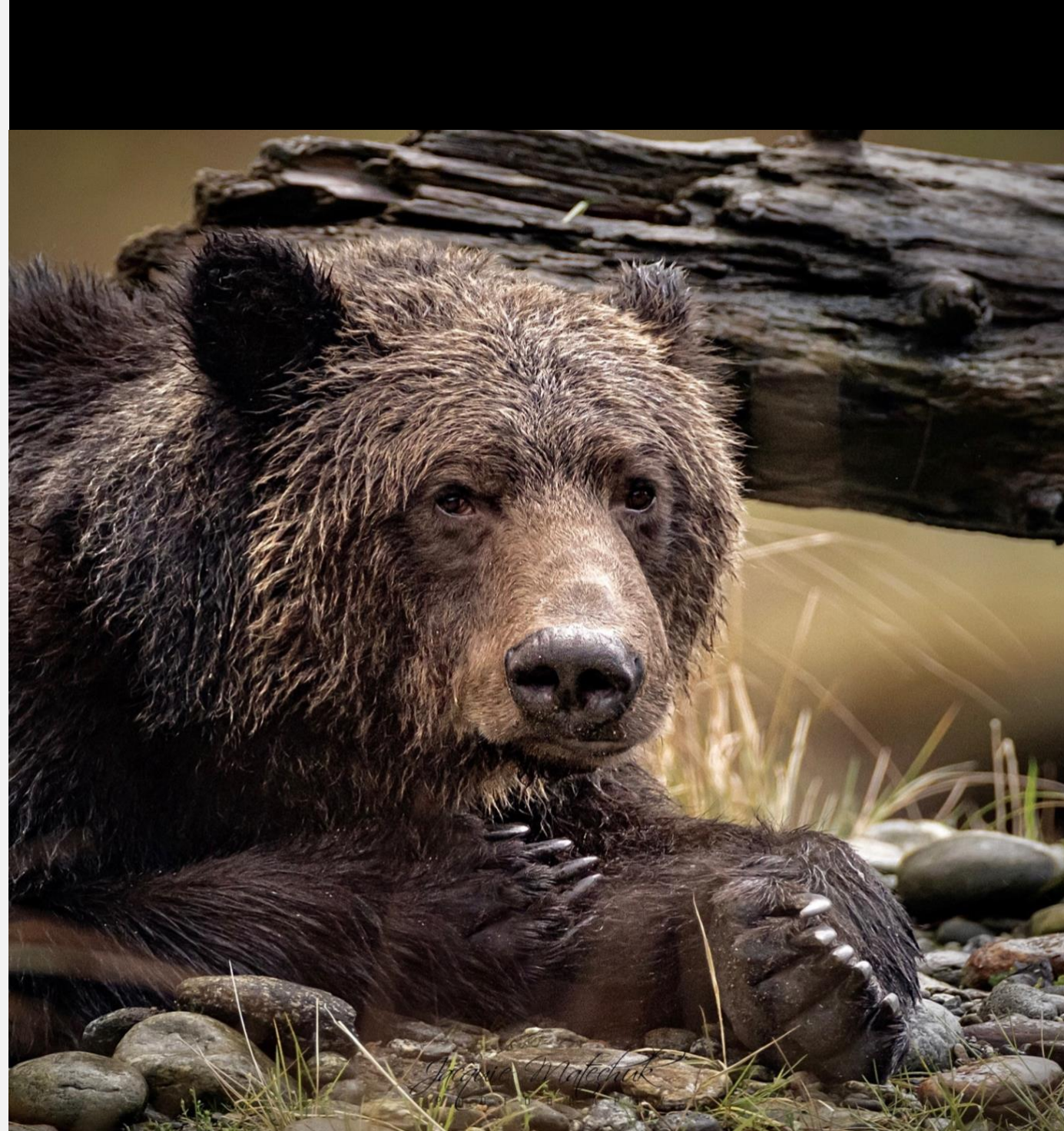


## WHAT'S INCLUDED:

- Single or shared accommodation for night of arrival in Prince Rupert
- Transportation from your hotel to the water taxi docks (and back)
- Chartered water taxi to and from Prince Rupert to the Khutzeymateen
- Single Occupancy room at the floating lodge
- Starlink Wi-fi at the floating Lodge
- Daily cruises through the Khuzeymanteen Inlet and surrounding areas in covered Zodiac designed for 10 pp
- All weather, insulated one piece suits for outdoor comfort
- Services of a fully qualified local Bear Guide/Skipper
- In-field coaching and bear education with Jacquie Matechuk
- \$150 Park Fee and \$25 Bear Sustainability fee
- All meals as listed on the itinerary, by In-House Chef  
(B = Breakfast; L = Lunch; D = Dinner)  
All dietary needs can be met if presented in advance
- All non-alcoholic beverages as well as wine and beer, served with dinner

## WHAT'S NOT:

- Gratuities for crew (optional and/or discretionary, but always appreciated!)
- Transportation between your home and Prince Rupert, BC.
- Personal belongings and equipment as per "Clothing & Equipment List".
- Any meals while staying in Prince Rupert.
- Excess baggage charges or baggage storage fees.
- Any travel insurance / extra personal expenses incurred due to weather, logistical delays, or delayed departures of chartered or scheduled aircraft.



# KHUTZEMATEEN 2025

Please Note: Due to the early meeting time on the first day, you must arrive in Prince Rupert prior to Day 1 of your expedition.



DAY 1  
21 June – L/D



DAY 2  
22 June – B/L/D



DAY 3  
23 June – B/L/D



DAY 4  
24 June – B/L/D



DAY 5  
25 June - B

## Khutzemateen, BC

An early morning transport to the water taxi docks will transport us to the Khutzeymateen Lodge. The boat is covered & heated, so watch for marine life while on route. We will unload our bags, settle into our cabins then suit up to spend the remainder of the afternoon pursuing bear-viewing opportunities in and around the Inlet.

## Khutzemateen, BC

The day remains flexible so that we can maximize our bear and wildlife viewing opportunities. The tide schedule varies and will largely dictate our time spent in the zodiacs. We will find ourselves in some part of the estuary/inlet viewing what could be any number of animals, including black bears, grizzly bears, seals, river otters, coastal wolves, geese, ducks, and eagles to name a few.

## Khutzemateen, BC

Similar to the previous day, we'll start with a hearty breakfast and then into the Zodiac to look for bears grazing in the grasses and moving along the shorelines. Following the tides, we may slide up to shore in the zodiac, prepared to spend some intimate time with the wildlife here. At dusk after the evening's activities, you'll return to the boat to enjoy a hot drink and dinner while we share in the day's events.

## Prince Rupert, BC

After a hearty breakfast and soaking in the serene view, the water taxi will arrive for our return trip to Prince Rupert.

*Please be advised that there is always a possibility that flights home may be delayed due to adverse weather conditions, and you should therefore make connecting airline reservations that can be changed with little or no penalty.*





## CLOTHING & EQUIPMENT:

Below you'll find a list of the clothing and equipment you will need on your expedition. It is of utmost importance that you follow this list accurately for your own comfort and well-being. The proper preparation is a vital factor in an expedition's success. When selecting your clothing, keep in mind the following principles about staying warm and dry:

### LAYERING

It is very effective to wear layers of clothing to stay warm, as the air trapped between the layers acts as an insulator. Layering also allows you to regulate your body heat by adjusting the number of layers, depending on the temperature and your activity level. There are 3 main layers: Transfer is the layer next to your skin; Insulating is the main warmth layer(s); and, Protective is the outer layer to protect you from wind, rain, and other elements.

### KEEPING DRY

Wetness increases the loss of body heat and is uncomfortable, so it's important to stay as dry as possible. Some clothing is hydrophobic, and therefore, stays dry (i.e., synthetics such as polypropylene, polyester, capilene, and natural fibres such as wool and silk). Clothing made of these materials are great for expeditions. Be careful of other materials (e.g., cotton and down), because they are absorbent and stay wet. Also, avoid overdressing as it can cause excess perspiration and therefore wetness.

Polypropylene, capilene, fleece, pile, polarplus, synchilla are all names for light or medium weight synthetic fabric that insulate even when wet and dry quickly! Today, garments are often called by the company that makes them, such as IceBreaker, Patagonia, MEC, Arcteryx & Helly Hansen.

## CLOTHING & EQUIPMENT: CONTINUED

The Floating Lodge will provide full weather suits available for you to use at no additional cost, should you prefer not to bring all your own gear. Older raingear that has not been tested in a while should be re-waterproofed in your washing machine. Eg. Grangers, NixWax available at outdoor stores and on Amazon. If you do bring Gore-tex on this expedition be sure to wash it in fresh water and mild soap when you return.

### LUGGAGE WEIGHT:

Please do your best to only pack what you need for your stay. Storage of additional luggage is available at the boat dock with Gat Leedem.

### WHAT TO PACK:

- Clothing for cool, wet weather and sunshine - it can change quickly, even within the same day.
- Bring warm clothes for the boat! Don't forget a beanie/woollen hat/toque, gloves and warm layers. You won't regret bringing a buff to keep your neck warm.
- Raincoat (there's a reason it's called the Great Bear Rainforest!)
- Warm and waterproof footwear for trips on the boat.
- A water bottle for trips on the boat.
- Swimsuit for the sauna.
- We have 100% natural soap and shampoo at the lodge but bring your toothbrush, toothpaste and deodorant etc. We are a **'fragrance sensitive'** lodge, for the bears and for the humans.
- Sunglasses & sunscreen.
- Some of our rooms have skylights and the nights can be light during the northern summer - if you are sensitive to light, bring an eye mask for sleeping.
- Earplugs if you're a light sleeper. Nighttime visits from the resident seals can get loud on occasion.
- Your camera, lenses and phone chargers!







## OTHER STUFF

NOTE: Your guides will carry a wilderness first aid kit. However, you should bring the following items for your own personal use:

- Pain Reliever (e.g. Aspirin)
- Mild Anti-inflammatory (e.g. Ibuprofen)
- Any personal medications and a list of allergies

### OPTIONAL ITEMS:

- Binoculars (but there are several you may borrow)
- Laptop computer and/or backup device
- Drawing pad or journal
- Book/reading material
- Hard soled slippers (for evenings at the lodge)
- Mild Anti-inflammatory (e.g. Ibuprofen)

## CONTACT INFORMATION

Jacquie Matechuk

1 (403) 862-4566 (Whats App / Message)

[jacquie@broughttolife.ca](mailto:jacquie@broughttolife.ca)









**Canon**  
AMBASSADOR

 | **f-stop**  
Staff PRO

## PHOTOGRAPHIC BENEFITS:

- One-on-one camera and imagery tutoring based on YOUR needs
- In-field coaching and spotting, helping you to be prepared for that perfect moment
- Small hand-selected group ensures like-minded people and a positive learning environment.
- With 2 certified bear guides on each expedition, we'll help ensure you learn about the behaviour of the animals we come across. Not only will you better understand the action as it unfolds, you'll get the very best out of each wildlife interactions
- Both technical and artistic guidance to elevate your photography
- Post processing and editing tips for every level of photographer
- Pre-departure prep session to address any questions you may have
- Expert Captain (host) with unique territorial access earned through decades of experience in delivering ethical world class tours
- Exclusive f-stop gear discount for purchases 30 days prior or following your excursion





---

p 1-403-862-4566

e [jacquie@broughttolife.ca](mailto:jacquie@broughttolife.ca)